



**Joe Duffy**  
Group Services

PROTECT YOUR PURCHASE



## **YOUR CAR IS IN SAFE HANDS**

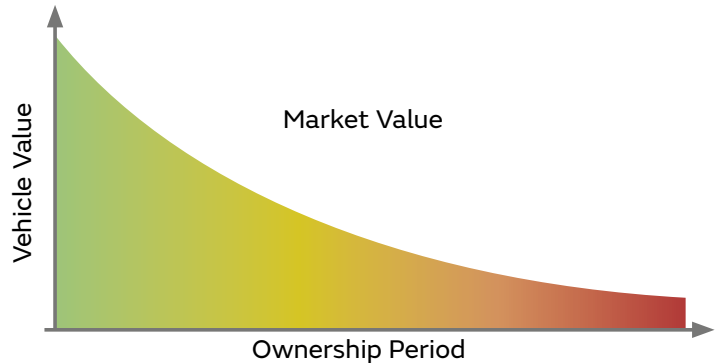
One of the main advantages of being part of Ireland's largest motor retail Group is the extra security that it brings to our dealership and that in turn allows us to offer you peace of mind when buying your car.

- **COMBINED GUARANTEED ASSET PROTECTION**
- **SMART REPAIR CONTRACT**
- **ALLOY WHEEL REPAIR CONTRACT**
- **JOE DUFFY ASSIST RECOVERY SERVICE**
- **CARMOUR PAINT AND INTERIOR PROTECTION**
- **JOE DUFFY SERVICE PLAN**

# COMBINED GUARANTEED ASSET PROTECTION

When purchasing a vehicle you need to consider protecting yourself against probably the single biggest financial risk associated with ownership: your vehicle being declared a write-off.

Your comprehensive motor insurance does not cover everything. In the event of your vehicle being declared a write-off, you could be left with a significant difference between your motor insurance payout and what you paid for the vehicle or owe your finance company.



**PROTECT YOURSELF  
AGAINST POSSIBLY THE  
SINGLE BIGGEST  
FINANCIAL RISK WHEN  
PURCHASING A VEHICLE.**

Motor insurance only covers you for the market value of your vehicle at the time it is declared a write-off.

Combined Guaranteed Asset Protection is subject to the terms and conditions contained in the policy schedule. You should note that there are certain limitations in terms of the maximum amount you may claim. Please ask your sales executive for further details.

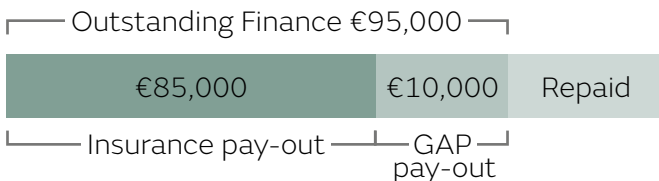


# HOW IT WORKS

If you bought your vehicle for €120,000 and your motor insurance pay-out is €95,000 RTI can pay up to the difference of €25,000 to top it up to the original value.



If you financed your vehicle for €120,000 and your motor insurance pay-out is €85,000 while your outstanding finance payment is €95,000 Guaranteed Asset Protection insurance may pay-out the difference of up to €10,000.



Cover is available for varying durations, depending on your requirements and according to the terms of your finance agreement. Cover ends earlier in the event of a paid claim or if the vehicle is no longer in your possession.

## EXCESS

Provides a contribution of up to €250 towards your motor insurance policy excess.

## CLAIM

A range of claim limits are available depending on the premium paid and the purchase price of your vehicle.

## VEHICLE ACCESSORIES COVERED

As long as accessories are fitted by the dealer and are manufacturer approved, we will cover up to €1,500 of extras. Manufacturer fitted accessories are covered.

## TRANSFERABLE

If during the first year of cover, the vehicle is written off and you get a replacement vehicle on a “new for old” basis, you can transfer the remaining duration of the policy to your replacement vehicle free of charge. You may then subsequently, at any time, transfer any remaining period of insurance on the policy due to a further change of vehicle, on payment of an administration fee of €35, as long as the replacement vehicle falls within the price range specified in your policy schedule.

## CANCELLABLE

If, for any reason, you wish to cancel your policy and you do so within 30 days, and no claim has been registered with AutoProtect during this time, we will give you a full refund. After that, you may still cancel at any point, subject to a €35 administration fee. You will receive a pro-rata refund reflecting the length of the term remaining.

## SIMPLE TO ARRANGE

Your sales executive will be happy to answer any questions you may have and confirm your eligibility for Combined Guaranteed Asset Protection.

# SMART REPAIR CONTRACT

Ever notice minor damage on your vehicle, wishing it could be easily repaired?

Our SMART Repair Contract provides a small scratches body repair system that will keep your vehicle in showroom condition, without compromising your no-claims bonus. The contract ensures your vehicle remains free from chips, minor dents, light scratches and scuffs.

With our SMART Repair Contract your vehicle is covered for up to 15 repairs over a three-year period.

The Business Manager will be pleased to assess your needs when it comes to a SMART Repair Contract. They will only offer you products that they believe you will benefit from.

## BENEFIT THE SMART REPAIR WAY:

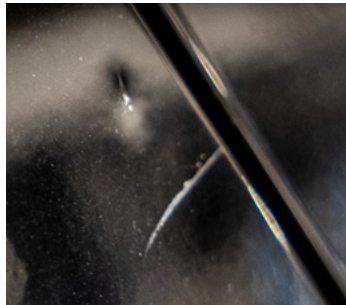
- 36 months' cover
- Safeguard your no-claims bonus
- Could improve your vehicle's re-sale price
- Keep your vehicle in showroom condition
- Repairs guaranteed for as long as you own the vehicle
- Should a case not qualify as a SMART repair, up to €250 contribution will be paid towards a bodyshop repair

### THE SMART REPAIR CONTRACT COVERS:

- Private vehicles up to 36 months
- Up to 15 repairs covering:
  - Dents not exceeding 15cm in diameter
  - Scratches not exceeding 15cm in length
  - Chips not exceeding 1.5mm in diameter
  - Bumper scuffs not exceeding 15cm in diameter

### THE SMART REPAIR CONTRACT EXCLUDES:

- Panel replacement
- Stickers and decals
- Beading and mouldings
- Third-party liability cover
- Replacement bumpers
- Cracked or dented bumpers
- 3-Stage Pearl Paint



SCRATCHES



DENTS



CHIPS



SCUFFS

# ALLOY WHEEL REPAIR CONTRACT

No matter how careful you are, alloy scuffs and scratches seem to be a fact of motoring life; unless you have an Alloy Wheel Repair Contract.

No more inconvenient, pricey trips to the bodyshop. Our alloy wheel repair contract gives you peace of mind and keeps your alloys in showroom condition.

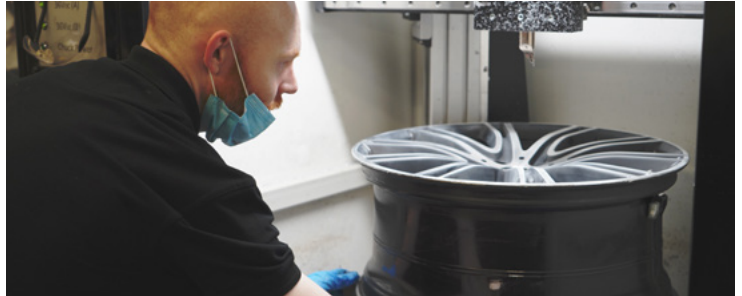
## SIGNIFICANT BENEFITS AND FEATURES

- Covers you for the cost of repairs from accidental damage to your alloy wheels
- We pay an expert to restore scuffs and scratches
- You can claim up to 12 wheel repairs over the period of the contract
- If the wheel is deemed unrepairable we will contribute €150 towards a replacement

## EXCLUSIONS\*

- Liability cover
- Bodyshop repairs
- Customised paint finishes
- Chrome-effect or split-rim construction wheels

\*For full terms & conditions visit the website.



**BEFORE**



**AFTER**



# JOE DUFFY ASSIST RECOVERY SERVICE

Joe Duffy Assist Recovery Service is an emergency assistance service designed to suit you. Joe Duffy Assist operates 24 hours a day, 365 days a year for you to contact, should your vehicle experience a breakdown.

Available 24/7 365  
**0818 297 027**

Joe Duffy Assist are trained to the highest standard and backed by the latest computer technology and mapping facilities together with a fully trained network of Recovery Operators throughout Ireland.

## ROADSIDE ASSISTANCE AND RECOVERY

If your vehicle suffers a breakdown:

- An electrical or mechanical failure which immediately renders the vehicle immobilised.
- Running out of fuel
- Flat tyres
- Locking your key in the vehicle

Help will be sent to the scene of the breakdown and we will pay call-out fees and mileage charges needed to repair or assist with the vehicle.

If, in the opinion of the Recovery Operator, they are unable to repair the vehicle at the roadside, the Recovery Controller will assist in the following way:

- Arrange for your vehicle, you and up to five passengers to be recovered to the nearest garage able to undertake the repair, or;
- If the above is not possible at the time of the breakdown they will arrange for your vehicle, you and up to five passengers to be transported to your home address or original destination.

## HOME ASSIST

A Recovery Operator will be despatched to your home address or within a 2km radius. Attempts will be made to repair your vehicle on the spot. If a repair is not possible they will transport your vehicle to the nearest repairing garage.



# PAIN T AND INTERIOR PROTECTION

Joe Duffy teamed up with Carmour Paint and Interior Protection to give your car an all-round protective layer. Maintain the showroom condition of your vehicle and eliminate the need to wax and polish. Protect your seats and carpets from dirt and spills while preserving the texture and appearance of the interior.



After our trained technicians have professionally applied our protection to your car, we provide you with a selection of aftercare products to keep your car gleaming. Our comprehensive aftercare range has been specifically designed to give you all the car cleaning and car detailing products you'll require to keep your car in pristine condition.

## PAIN T PROTECTION

Our paint sealants are some of the most technologically advanced treatments available. The tough, high-gloss barrier bonds to the paintwork, seals the surface against harmful UV rays, acid rain and atmospheric pollution.



## FABRIC/LEATHER PROTECTION

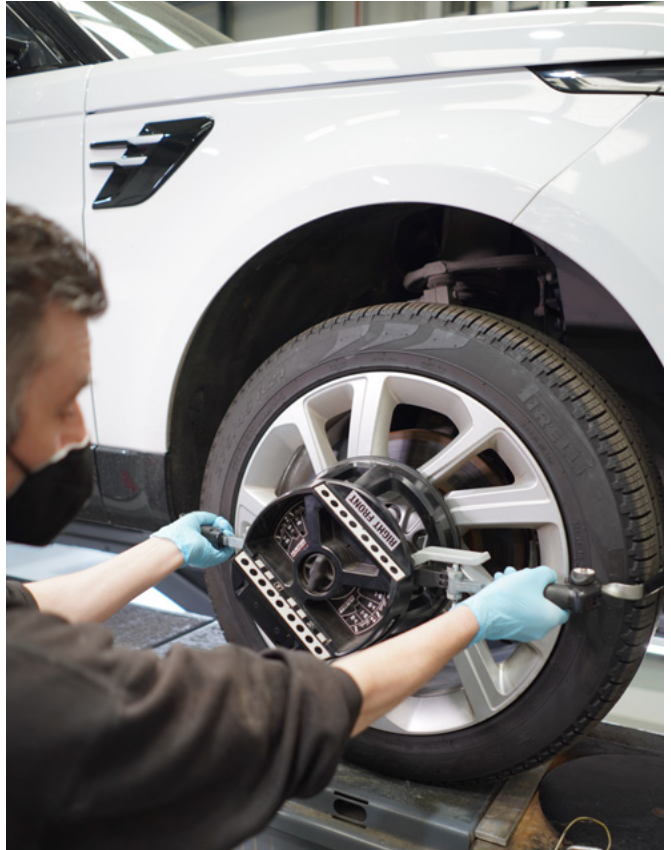
Liquids and dirt can't penetrate the fabric or leather once coated with Fabric/Leather Protector. Therefore it may pass between or rest above fibres but won't affect them.





# JOE DUFFY SERVICE PLAN

At Joe Duffy Group, we strive to make servicing as convenient and hassle free for our customers as possible. Our tailored service plans provide peace of mind about your servicing costs with comprehensive coverage for up to 36 months from your date of purchase. In addition, all service plans include complimentary roadside assistance, complimentary vehicle health checks any time you need an inspection, along with a complimentary wash and vacuum with every service.



All engine types and sizes are covered, from petrols, diesels to electric and motorbikes, we have the perfect service plan for you. Two oil and filter changes are included or two full electrical inspections if you've already made the switch to electric. Pollen filter replacement is also included during the second service along with a topping up of fluids at each service interval.

Speak to a member of our aftersales team to find out more about the exceptional value and benefits of the Joe Duffy Group Service Plan.

# SERVICE PLAN COVER

An overview of what's covered and the restrictions for each service plan.

|                                    | JAGUAR & LAND ROVER                                 | ELECTRIC  |
|------------------------------------|---|---|
| <b>Customer Price</b>              | €1,299  | €1,299  |
| <b>Engine Size</b>                 | Any   | Any   |
| <b>Plan Duration</b>               | Up to 36 months                                     | Up to 36 months                                     |
| <b>How Many Services</b>           | 2 services  | 2 services  |
| <b>What's Included</b>             | 2 engine oil and filter changes (1 per service)     | 2 full electrical inspections with checks           |
|                                    | Pollen filter on every service                      | Pollen filter at 2 <sup>nd</sup> service            |
|                                    | Fluid top-ups at each service including screen wash | Fluid top-ups at each service including screen wash |
|                                    | Recall and Software Check                           | Recall and Software Check                           |
|                                    | Joe Duffy Assist Roadside Assistance                | Joe Duffy Assist Roadside Assistance                |
|                                    | Complimentary Vehicle Health Check                  | Complimentary Vehicle Health Check                  |
|                                    | Wash and Vac with every service                     | Wash and Vac with every service                     |
|                                    | Replacement Wiper Blades (one set for duration)     | Replacement Wiper Blades (one set for duration)     |
| <b>Vehicle Age Restriction</b>     | Up to 10 years old at time of sale                  | Up to 10 years old at time of sale                  |
|                                    | Max 60,000km usage from time of purchase            | Max 60,000km usage from time of purchase            |
| <b>Vehicle Mileage Restriction</b> | 150,000km at time of purchase                       | 150,000km at time of purchase                       |
|                                    |   | Full battery charge on every service                |



**Joe Duffy**  
Group Services

**Joe Duffy Land Rover**

**(01) 870 1440**

**JoeDuffy.ie**